



Pot of Gold Weekend

DASH FOR CASH

Saturday 31ST January 2026

SAILING INSTRUCTIONS

The Organising Authority (OA) is
Hillarys Yacht Club Inc.



1. Rules

- 1.1. The regatta will be governed by the rules as defined in The Racing Rules of Sailing (RRS) and by the Sailing Instructions.
- 1.2. The race is classed as Category 6, as defined in section 2.01 of the Yachting Australia Special Regulations. The race will have an escort safety boat.
- 1.3. RRS 44.1 – Taking a penalty – is changed for all Divisions so that the Two-Turns penalty is replaced by the One-Turn penalty.
- 1.4. Appendix T – Arbitration shall apply

2. Sailing Instructions

- 2.1. These Sailing Instructions will be available on the Hillarys Yacht Club web site, www.hillarysyachtclub.com.au no later than 5 January 2026.
- 2.2. Any change to the sailing instructions will be posted by 1700 on Thursday 29th January.

3. Communications with Competitors

- 3.1. The online official notice board is located under Water Sports, Keelboat Racing, Pot of Gold Weekend 2026 at www.hillarysyachtclub.com.au.
- 3.2. [DP] The race radio communications will be conducted on VHF radio channel 72.
- 3.3. All boats will carry a VHF radio for regatta communications.
- 3.4. Following the Pot of Gold start and prior to the first Dash for Cash warning signal, all boats must contact Hillarys Race Control stating the boat's name and confirming the number of people on board.
- 3.5. All boats must provide the OA with crew details including emergency contact details of all people on board by no later than 1700 Thursday January 29. The OA will email the skipper with a form for this purpose following event registration.
- 3.6. While inside Fremantle Port limits, boats are required to maintain a listening watch on VHF channel 12.

4. Code of Conduct

- 4.1. Competitors and support persons shall comply with reasonable requests from race officials.

5. Eligibility and Entry

- 5.1. See NOR for details.



6. Divisions

- Division 1
- Division 2
- Division 3 - Jib and Main (JAM) only

7. Handicap

- 7.1. Boats joining the regatta will race in a division and under a handicap determined by the Handicap Officer. The initial handicap will rank the boat behind boats of a similar size and Performance.

8. Schedule of Races

- 8.1. The schedule of Race events.

The Pot of Gold race precedes the Dash for Cash. The Pot of Gold start times are shown here for information only.

Date	Time	Details
Saturday 31st January	0930	First Warning signal Pot of Gold Division 2
	0935	Warning signal Pot of Gold Division 1
	1030	Warning Signal Division 3 Dash for Cash
	1035	Warning Signal Division 2 Dash for Cash
	1040	Warning Signal Division 1 Dash for Cash

The Shepherdess Cup race precedes the Dash Back. The Shepherdess Cup start times are shown here for information only.

Date	Time	Details
Sunday 1 February	1000	First Warning signal Shepherdess Cup Division 3
	1005	Warning signal Shepherdess Cup Division 2
	1010	Warning signal Shepherdess Cup Division 1
	1035	Warning Signal Division 3 Dash Back
	1040	Warning Signal Division 2 Dash Back
	1045	Warning Signal Division 1 Dash Back

9. Class Flags

- 9.1. Class flags shall be displayed from the backstay or from the leach of the mainsail.

Division 1		Navy numeral 1
Division 2		Navy numeral 2
Division 3		Navy numeral 3



10. Racing Area

10.1. The Racing Area will be the waters of the Indian Ocean. From Fremantle to Hillarys

11. Course

11.1. The start will be a boat start off Leighton Beach.

11.2. The Day Buoy will be a marker buoy situated approximately 0.5 Nm to windward of the Start Line. Prior to the Warning Signal, the Committee Boat will display a red or green flag.

A RED flag means the Day Buoy mark is to be left to Port.

A GREEN flag means the Day Buoy mark is to be left to Starboard.

11.3. The courses are outlined in SI Addendum A including the order in which the marks are to be passed and the side on which each mark is to be left.

11.4. The course to use will be signalled by international numeral pennant corresponding to the course number.

12. Obstructions

following areas are designated as 'obstructions' as defined in RRS 'Definitions' for all races:

12.1. Swanbourne exclusion zone While racing boats shall not enter an area bounded (shaded orange in the diagram below) by:

- A line joining Swanbourne exclusion zone buoy (NW) and Swanbourne exclusion zone buoy (SW), and
- Lines to the shore due east of these points



13. The Start

13.1. Races will be started using RRS 26 with the warning signal made 5 minutes before the starting signal.

13.2. The starting line is between a staff displaying an orange flag on the committee boat at the starboard end and the course side of the port-end starting mark.

13.3. Boats whose warning signal has not been made shall avoid the starting area during the starting sequence for other races.



Hillarys Yacht Club
Pot of Gold Weekend



2026 Dash for Cash Sailing Instructions

- 13.4. If any part of a boat's hull is on the course side of the starting line at her starting signal and she is identified, the race committee will attempt to hail her sail number. Failure to hail her number, failure of her to hear such a hail, or the order in which boats are hailed will not be grounds for a redress for request. This changes RRS 62.1(a).
- 13.5. A boat that does not start within 15 minutes after her starting signal will be scored Did Not Start without a hearing. This changes RRS A5.1, A5.2 and A5.3.
- 13.6. When a general recall is signalled, the warning signal for the first recalled fleet will be displayed at the start signal for the last fleet in the sequence. Warning signals for other recalled fleets will follow in order thereafter.

This changes RRS 29.2 (General Recall) and Race Signals.



14. The Finish

The finishing line is between a staff displaying blue flag on the HYC Race Control tower at the starboard end and a red flag situated approximately 300m north on the port end.

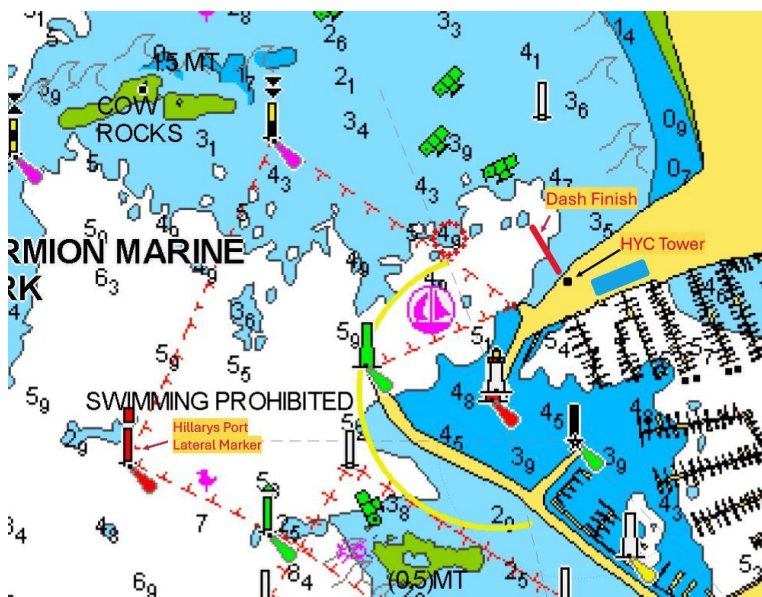


Diagram to show finish line only – Not for navigation

15. Scoring

15.1. The Low Points scoring system of RRS Appendix A will apply.

16. Time Limit

16.1. The first boat for each division must finish the course in 4 hours and 30 minutes. Any boat not finishing within 2 hours and 30 minutes of their division's first boat finishing time shall receive a DNF result.

16.2. Failure to meet the time limit described in 16.1 will not be grounds for redress. This changes RRS 62.1(a).

17. Hearing Requests

17.1. The protest time limit is 120 minutes after the last boat in that class finishes or the race committee signals no more racing today, whichever is later.

17.2. Hearing request forms are available from the race office at the HYC Race Control tower.

18. Safety Regulations

18.1. A boat that retires from a race shall notify the race committee at the first reasonable opportunity.

19. Risk Statement

19.1. RRS 3 states: 'The responsibility for a boat's decision to participate in a race or to continue to race is hers alone.' By participating in this event each competitor agrees and acknowledges that sailing is a potentially dangerous activity with inherent risks. These



risks include strong winds and rough seas, sudden changes in weather, failure of equipment, boat handling errors, poor seamanship by other boats, loss of balance on an unstable platform and fatigue resulting in increased risk of injury. Inherent in the sport of sailing is the risk of permanent, catastrophic injury or death by drowning, trauma, hypothermia or other causes.

20. Insurance

20.1. Each participating boat shall be insured with valid third-party insurance with a minimum cover of \$10 million per incident or equivalent. By taking part in the regatta owners are deemed to have made a declaration that they have such cover.

21. Liability

21.1. Competitors participate in the regatta entirely at their own risk and responsibility. The OA is not responsible for the seaworthiness of a boat whose entry is accepted or the sufficiency or adequacy of its equipment. The OA reserves the right to refuse an entry and special attention is drawn to Rule 4 in RRS.

22. POSITION REPORTS [NP][SP]

22.1. Boats shall report to Race Control by VHF at the first reasonable opportunity after rounding the mark designated in the courses.

22.2. If unable to contact Race Control by VHF, contact by phone:

Saturday: 0477 110 252

Sunday: 9435 8855

23. Prizes

23.1. Pennants and prizes will be awarded for 1st, 2nd and 3rd places for PHS results for Divisions 1, 2, 3.

24. Race Committee

24.1. The Organising Authority for this race appoints the following to carry out specific functions in the management of the race:

Role	Name	Contact
Principal Race Officer	Trevor Milton	
Race Officer	Trevor Milton	
Sailing Office	On Water Events Coordinator	9246 2833
Hearing Committee chairperson	HYC Committee Nominated	

25. Enquiries and Communications

On Water Events Coordinator – Mason Veness
Hillarys Yacht Club
Mail: PO Box 348, Hillarys Western Australia 6923
Email: mason@hillarysyachtclub.com.au
Phone: 9246 2833



ADDENDUM A

A.1 COURSES

All Divisions.

Course 1	Approx. Distance: 20.3NM	Rounding	Course Signal
Start			
Day Buoy			
Gage Roads Red A		Starboard	
HYC Sorrento Buoy		Port	
HYC Scarborough Beach Buoy		Port	
HYC Sorrento Buoy		Port	
HYC Finish		Finish between Western-most Port Channel Marker off Hillarys Marina and HYC start tower	

Course 2	Approx. Distance: 15.9NM	Rounding	Course Signal
Start			
Day Buoy			
Gage Roads Red A		Starboard	
Centaur (Centaur Reef South Cardinal Mark)		Starboard	
HYC Scarborough Beach Buoy		Port	
HYC Sorrento Buoy		Port	
HYC Finish		Finish between Western-most Port Channel Marker off Hillarys Marina and HYC start tower	

Course 3	Approx. Distance: 18.5NM	Rounding	Course Signal
Start			
Day Buoy			
Gage Roads Red A		Starboard	



Hillarys Yacht Club
Pot of Gold Weekend



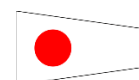
2026 Dash for Cash Sailing Instructions

HYC Beach Buoy	Starboard	
HYC Scarborough Beach Buoy	Port	
HYC Sorrento Buoy	Port	
HYC Finish	Finish between Western- most Port Channel Marker off Hillarys Marina and HYC start tower	

Dash Back

Course One (~17 Nm)

Course Signal



Mark	Rounding	Comment / Rounding Report
START		The start boat will be the HYC start boat "Alibi" off Sorrento Beach
DAY BUOY		
HYC SCARBOROUGH BEACH BUOY	STBD	
GAGE ROADS RED "A" BUOY	PORT	
CAMPBELL BUOY	STBD	Position report on VHF 72
HALL BANK BEACON	STBD	
FINISH		The Finish

A.2 MARKS

Gage Roads Red A	31° 59.004 S	115 41.687 E
HYC Beach Buoy	31 51.70 S	115 44.45 E
HYC Sorrento Buoy	31 50.17 S	115 44.42 E
HYC Scarborough Beach Buoy	31 53.64 S	115 44.76 E
Centaur (Centaur Reef South Cardinal Mark)	31 52.70 S	115 43.00 E
Swanbourne exclusion zone buoy (NW)	31 56.60 S	115 43.30 E
Swanbourne exclusion zone buoy (SW)	31 58.90 S	115 43.30 E