



## Pot of Gold Weekend

### Pot of Gold & Shepherdess Cup

Saturday 31 January & 1 February 2026  
SUPPLEMENTARY SAILING INSTRUCTIONS

The Organising Authority (OA) is  
Hillarys Yacht Club Inc.

Hillarys Yacht Club  
Pot of Gold Weekend

2026 Pot of Gold and Shepherdess Cup Supplementary Sailing Instructions

---

[NP] Denotes that a boat may not protest another boat for breaking that rule. This changes RRS 60.1(a).

[SP] Denotes a rule for which a standard penalty may be applied by the Race Committee. This changes RRS A5.

### 1. Rules

- 1.1. The event is governed by the rules as defined in The Racing Rules of Sailing (RRS), by the ORWA SIs 2025-2026 and as modified by these SSIs.
- 1.2. The Shepherdess Cup is classed as Category 5, as defined in section 2 of the Australian Sailing Special Regulations Part 1. The race will have an escort safety boat. This amends the Category described in the Notice of Race.
- 1.3. For Eligible boats the 2026 Pot Of Gold race will form part of the Fremantle Sailing Club Coastal Club Series (Mike Harvey Memorial Race and Shepherdess Cup)

### 2. Communications with Competitors

- 2.1. Notices to Competitors (NTCs) will be posted on the online official notice board located under Water Sports, Keelboat Racing, Pot of Gold Weekend 2026 at [www.hillarysyachtclub.com.au](http://www.hillarysyachtclub.com.au).
- 2.2. On the water, the Race Committee intends to monitor and communicate with competitors on VHF channel 72, 81 and 16
- 2.3. While inside Fremantle Port limits, boats are required to maintain a listening watch on VHF channel 12.

### 3. Eligibility and Entry

- 3.1. Eligible boats for the Pot of Gold shall enter via the ORWA web site ([www.oceanracingwa.com.au/competitor-information/race-entry/](http://www.oceanracingwa.com.au/competitor-information/race-entry/)), with accompanied required fee prior to 1700 Monday 26 January 2026
- 3.2. The Shepherdess cup is open to all boats entered in the 2026 Pot of Gold or 2026 Dash for Cash.

### 4. Schedule of Races

- 4.1. The schedule of Race events.

Date	Time	Details
Saturday 31 January	0930	First Warning signal Pot of Gold Division 2
	0935	Warning signal Pot of Gold Division 1
Sunday 1 February	1000	First Warning signal Shepherdess Cup Division 3
	1005	Warning signal Shepherdess Cup Division 2
	1010	Warning signal Shepherdess Cup Division 1

- 4.2. To alert boats that a race or sequence of races will begin soon, the orange starting line flag will be displayed with one sound at least five minutes before a warning signal is made.

Hillarys Yacht Club  
Pot of Gold Weekend

2026 Pot of Gold and Shepherdess Cup Supplementary Sailing Instructions

---

**5. Courses**

- 5.1. Refer SSI Addendum A.
- 5.2. The course to use will be signalled by international numeral pennant corresponding to the course number.

**6. Shortening Course**

RRS 32.2(a) applies. The Race Committee may advise of shortening via VHF 72 & 81.

**7. Penalty System**

- 7.1. For all boats, RRS 44.1 is changed so that the Two-Turns Penalty is replaced by the One-Turn Penalty.
- 7.2. Scoring Penalty – for some specific breaches of the rules, the Race Committee may apply a scoring penalty [SP] without a hearing. The Race Committee may still protest a boat when they consider the SP inappropriate. The scoring penalty is 2 points. This changes RRS 63.1 & Appendix A5.

**8. Time Limits**

There is no race time limit.

**9. Hearing Requests**

- 9.1. The protest time limit is 120 minutes after the last boat finishes the last race of the day or the Race Committee signals no more racing today, whichever is later.
- 9.2. Hearing request forms are available from the HYC Start Tower.
- 9.3. Notices will be posted no later than 30 minutes after the protest time limit to inform competitors of hearings in which they are parties or named as witnesses.
- 9.4. A boat intending to protest any other boat for any incident occurring in the racing area shall in addition to the existing requirements of RRS 61.1 make a VHF call to inform the other boat of her intention to "Protest" at the first reasonable opportunity for each incident. This changes RRS rules 61.1 (a), 61.1 (a)(1), 61.1 (a)(2), 61.1 (a)(4).

**10. POSITION REPORTS [NP][SP]**

- 10.1. Boats shall report to Race Control by VHF at the first reasonable opportunity after rounding the mark designated in the courses.
- 10.2. If unable to contact Race Control by VHF, contact by phone: 0477 110 252  
Saturday: 0477 110 252  
Sunday: 9435 8855

**11. Prizes**

- 11.1. Pot of Gold pennants and cash prizes will be awarded for 1st, 2nd and 3rd places for PHS and IRC results for Divisions 1 and 2.
- 11.2. The Shepherdess Cup will be awarded for PHS and IRC first place results for ORWA registered boats.

Hillarys Yacht Club  
Pot of Gold Weekend

---

2026 Pot of Gold and Shepherdess Cup Supplementary Sailing Instructions

---

11.3. Shepherdess Cup pennants will be awarded for 1st, 2nd and 3rd places for PHS and IRC results for Divisions 1, 2, 3.

11.4. Dash Back pennants will be awarded for 1st, 2nd and 3rd places for PHS and IRC results for Divisions 1, 2, 3.

**12. Enquiries and Communications**

On Water Events Coordinator – Mason Veness

Hillarys Yacht Club

Mail: PO Box 348, Hillarys Western Australia 6923

Email: [mason@hillarysyachtclub.com.au](mailto:mason@hillarysyachtclub.com.au)

Phone: 9246 2833

Hillarys Yacht Club  
Pot of Gold Weekend

2026 Pot of Gold and Shepherdess Cup Supplementary Sailing Instructions

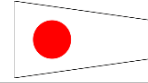
**ADDENDUM A**

**A.1 COURSES**

**Pot of Gold**

**Course One (~39 Nm)**

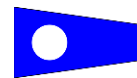
**Course Signal**



Mark	Rounding	Comment / Rounding Report
START in the vicinity of Hall bank Beacon		
DAY BUOY		
WESTERN SOUTH PASSAGE TRANSIT BEACON	PORT	
PARKER POINT EXCLUSION MARK SE	STBD	
CAPE VLAMINGH EXCLUSION MARK SE	STBD	
CAPE VLAMINGH EXCLUSION MARK SW	STBD	
CAPE VLAMINGH EXCLUSION MARK NW	STBD	Position report on VHF 81
ARMSTRONG POINT EXCLUSION MARK NW	STBD	
ARMSTRONG POINT EXCLUSION MARK NE	STBD	
HYC SCARBOROUGH BEACH BUOY	PORT	Position report on VHF 72
HYC SORRENTO MARK	PORT	
LATERAL STBD ENTRANCE MARKER HILLARYS MARINA	STBD	
HILLARYS FINISH		Finish between Western-most Port Channel Marker off Hillarys Marina and HYC start tower

**Course Two (~32 Nm)**

**Course Signal**



Mark	Rounding	Comment / Rounding Report
START in the vicinity of Hall bank Beacon		The start boat will be HYC Alibi
DAY BUOY		
CAMPBELL BUOY	PORT	
FAIRWAY LANDFALL BUOY	STBD	Position report on VHF 72
HYC SCARBOROUGH BEACH BUOY	PORT	
FAIRWAY LANDFALL BUOY	STBD	

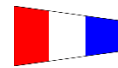
Hillarys Yacht Club  
Pot of Gold Weekend

2026 Pot of Gold and Shepherdess Cup Supplementary Sailing Instructions

HYC SCARBOROUGH BEACH BUOY	PORT	Position report on VHF 72
HYC SORRENTO MARK	PORT	
LATERAL STBD ENTRANCE MARKER HILLARYS MARINA	STBD	
HILLARYS FINISH		Finish between Western-most Port Channel Marker off Hillarys Marina and HYC start tower

**Course Three (~22.5 Nm)**

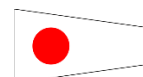
**Course Signal**



Mark	Rounding	Comment / Rounding Report
START in the vicinity of Hall bank Beacon		The start boat will be HYC Alibi
DAY BUOY		
GAGE ROADS RED "A" BUOY	STBD	
HYC SORRENTO MARK	PORT	
HYC SCARBOROUGH BEACH BUOY	PORT	
HYC SORRENTO MARK	PORT	
LATERAL STBD ENTRANCE MARKER HILLARYS MARINA	STBD	
HILLARYS FINISH		Finish between Western-most Port Channel Marker off Hillarys Marina and HYC start tower

**Shepherdess Cup  
Course One (~17 Nm)**

**Course Signal**



Hillarys Yacht Club  
Pot of Gold Weekend

2026 Pot of Gold and Shepherdess Cup Supplementary Sailing Instructions

<b>Mark</b>	<b>Rounding</b>	<b>Comment / Rounding Report</b>
START		The start boat will be the HYC start boat "Alibi" off Sorrento Beach
DAY BUOY		
HYC SCARBOROUGH BEACH BUOY	STBD	
GAGE ROADS RED "A" BUOY	PORT	
CAMPBELL BUOY	STBD	Position report on VHF 72
HALL BANK BEACON	STBD	
FINISH		The Finish

**Pot of Gold Hillarys Finish**

- 1.1. The finishing line is between a staff displaying blue flag on the HYC Race Control tower at the starboard end and a red flag situated approximately 300m north on the port end.

Hillarys Yacht Club  
Pot of Gold Weekend

2026 Pot of Gold and Shepherdess Cup Supplementary Sailing Instructions

HILLARYS FINISH

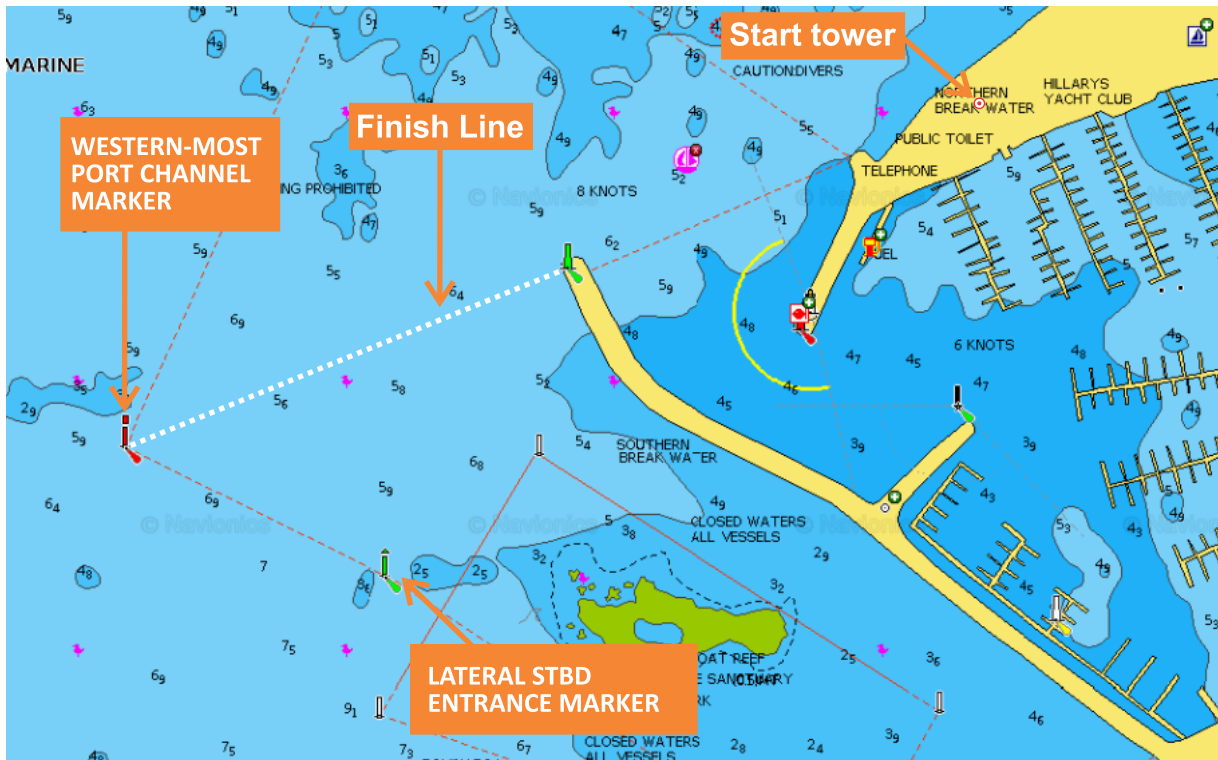


Diagram to show finish line only - Not for navigation