



Hillarys Yacht Club



**MITSUBISHI
ELECTRIC**

2025 MITSUBISHI ELECTRIC POT OF GOLD WEEKEND

Pot of Gold &
Shepherdess Cup
Saturday 18 & 19 January 2025

SUPPLEMENTARY SAILING INSTRUCTIONS



DIVERSITY
CHARTERS 


WESTERN PROJECTS
BUILT WITH PURPOSE



ONNL



NEXUS
ADVISERNET
YOUR TRUSTED PARTNER



Mitsubishi Electric Pot of Gold Weekend

Pot of Gold & Shepherdess Cup

Saturday 18 & 19 January 2025
SUPPLEMENTARY SAILING INSTRUCTIONS

The Organising Authority (OA) is
Hillarys Yacht Club Inc.

MITSUBISHI ELECTRIC POT OF GOLD SPONSORS



Hillarys Yacht Club
Pot of Gold Weekend

2025 Pot of Gold and Shepherdess Cup Supplementary Sailing Instructions

The notation '[NP]' in a rule means that a boat may not protest another boat for breaking that rule. This changes RRS 60.1(a).

1. Rules

- 1.1. The event is governed by the rules as defined in The Racing Rules of Sailing (RRS), by the ORWA SIs 2024-2025 and as modified by these SSIs.
- 1.2. The Shepherdess Cup is classed as Category 5, as defined in section 2 of the Australian Sailing Special Regulations Part 1. The race will have an escort safety boat. This amends the Category described in the Notice of Race.

2. Communications with Competitors

- 2.1. Notices to Competitors (NTCs) will be posted on the online official notice board located under Water Sports, Keelboat Racing, Pot of Gold Weekend 2025 at www.hillarysyachtclub.com.au.
- 2.2. On the water, the Race Committee intends to monitor and communicate with competitors on VHF channel 72, 81 and 16

3. Eligibility and Entry

- 3.1. Eligible boats for the Pot of Gold shall enter via the ORWA web site (www.oceanracingwa.com.au/competitor-information/race-entry/), with accompanied required fee prior to 1700 Monday 13 January 2025
- 3.2. The Shepherdess cup is open to all boats entered in the 2025 Pot of Gold or 2025 Dash for Cash.

4. Schedule of Races

- 4.1. The schedule of Race events.

Date	Time	Details
Saturday 18 January	0930	First Warning signal Pot of Gold Division 2
	0935	Warning signal Pot of Gold Division 1
Sunday 19 January	1000	First Warning signal Shepherdess Cup Division 3
	1005	Warning signal Shepherdess Cup Division 2
	1010	Warning signal Shepherdess Cup Division 1

5. Courses

- 5.1. Refer SSI Addendum A.
- 5.2. The course to use will be signalled by international numeral pennant corresponding to the course number.

Hillarys Yacht Club
Pot of Gold Weekend

2025 Pot of Gold and Shepherdess Cup Supplementary Sailing Instructions

6. Obstructions

In addition to the obstructions listed in SI 7.8.

Gage Roads Deepwater Channel

While racing, boats shall not enter an area bounded by a line joining the following coordinates:

Marks	Latitude	Longitude
Northern Entrance	31° 57.855'S	115° 40.229'E
	31° 57.731'S	115° 40.337'E
Central Corners	31° 58.553'S	115° 41.668'E
	31° 58.602'S	115° 41.474'E
Southern Corners	32° 00.392'S	115° 41.698'E
	32° 00.384'S	115° 41.538'E

7. Shortening Course

RRS 32.2(a) applies. The Race Committee may advise of shortening via VHF 72 & 81.

8. Penalty System

- 8.1. For all boats, RRS 44.1 is changed so that the Two-Turns Penalty is replaced by the One-Turn Penalty.
- 8.2. Scoring Penalty – for some specific breaches of the rules, the Race Committee may apply a scoring penalty [SP] without a hearing. The Race Committee may still protest a boat when they consider the SP inappropriate. The scoring penalty is 2 points. This changes RRS 63.1 & Appendix A5.

9. Time Limits

There is no race time limit.

10. Hearing Requests

- 10.1. The protest time limit is 120 minutes after the last boat finishes the last race of the day or the Race Committee signals no more racing today, whichever is later.
- 10.2. Hearing request forms are available from the HYC Start Tower.
- 10.3. Notices will be posted no later than 30 minutes after the protest time limit to inform competitors of hearings in which they are parties or named as witnesses.
- 10.4. A boat intending to protest any other boat for any incident occurring in the racing area shall in addition to the existing requirements of RRS 61.1 make a VHF call to inform the other boat of her intention to "Protest" at the first reasonable opportunity for each incident. This changes RRS rules 61.1 (a), 61.1 (a)(1), 61.1 (a)(2), 61.1 (a)(4).

Hillarys Yacht Club
Pot of Gold Weekend

2025 Pot of Gold and Shepherdess Cup Supplementary Sailing Instructions

11. Prizes

- 11.1. Pot of Gold pennants and cash prizes will be awarded for 1st, 2nd and 3rd places for PHS and IRC results for Divisions 1 and 2.
- 11.2. The Shepherdess Cup will be awarded for PHS and IRC first place results for ORWA registered boats.
- 11.3. Shepherdess Cup pennants will be awarded for 1st, 2nd and 3rd places for PHS and IRC results for Divisions 1, 2, 3.

12. Enquiries and Communications

Marshall Fox
Hillarys Yacht Club
Mail: PO Box 348, Hillarys Western Australia 6923
Email: mfox@apt-systems.com
Phone: 0425 100 056

Hillarys Yacht Club
Pot of Gold Weekend

2025 Pot of Gold and Shepherdess Cup Supplementary Sailing Instructions

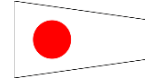
ADDENDUM A

A.1 COURSES

Pot of Gold

Course One (~39 Nm)

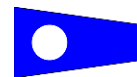
Course Signal



Mark	Rounding	Comment / Rounding Report
START in the vicinity of Hall bank Beacon		
DAY BUOY		
WESTERN SOUTH PASSAGE TRANSIT BEACON	PORT	
PARKER POINT EXCLUSION MARK SE	STBD	
CAPE VLAMINGH EXCLUSION MARK SE	STBD	
CAPE VLAMINGH EXCLUSION MARK SW	STBD	
CAPE VLAMINGH EXCLUSION MARK NW	STBD	Rounding report promptly after rounding on VHF 81
ARMSTRONG POINT EXCLUSION MARK NW	STBD	
ARMSTRONG POINT EXCLUSION MARK NE	STBD	
HYC SCARBOROUGH BEACH BUOY	PORT	Rounding report promptly after rounding on VHF 72
HYC SORRENTO MARK	PORT	
LATERAL STBD ENTRANCE MARKER HILLARYS MARINA	STBD	
HILLARYS FINISH		Finish between Western-most Port Channel Marker off Hillarys Marina and HYC start tower

Course Two (~32 Nm)

Course Signal



Mark	Rounding	Comment / Rounding Report
START in the vicinity of Hall bank Beacon		The start boat will be HYC Alibi
DAY BUOY		
CAMPBELL BUOY	PORT	
FAIRWAY LANDFALL BUOY	STBD	Rounding report promptly after rounding on VHF 72

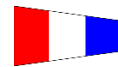
Hillarys Yacht Club
Pot of Gold Weekend

2025 Pot of Gold and Shepherdess Cup Supplementary Sailing Instructions

HYC SCARBOROUGH BEACH BUOY	PORT	
FAIRWAY LANDFALL BUOY	STBD	
HYC SCARBOROUGH BEACH BUOY	PORT	Rounding report promptly after rounding on VHF 72
HYC SORRENTO MARK	PORT	
LATERAL STBD ENTRANCE MARKER HILLARYS MARINA	STBD	
HILLARYS FINISH		Finish between Western-most Port Channel Marker off Hillarys Marina and HYC start tower

Course Three (~22.5 Nm)

Course Signal



Mark	Rounding	Comment / Rounding Report
START in the vicinity of Hall bank Beacon		The start boat will be HYC Alibi
DAY BUOY		
GAGE ROADS RED "A" BUOY	STBD	
HYC SORRENTO MARK	PORT	
HYC SCARBOROUGH BEACH BUOY	PORT	
HYC SORRENTO MARK	PORT	
LATERAL STBD ENTRANCE MARKER HILLARYS MARINA	STBD	
HILLARYS FINISH		Finish between Western-most Port Channel Marker off Hillarys Marina and HYC start tower

Hillarys Yacht Club
Pot of Gold Weekend

2025 Pot of Gold and Shepherdess Cup Supplementary Sailing Instructions

Pot of Gold Hillarys Finish

HILLARYS FINISH

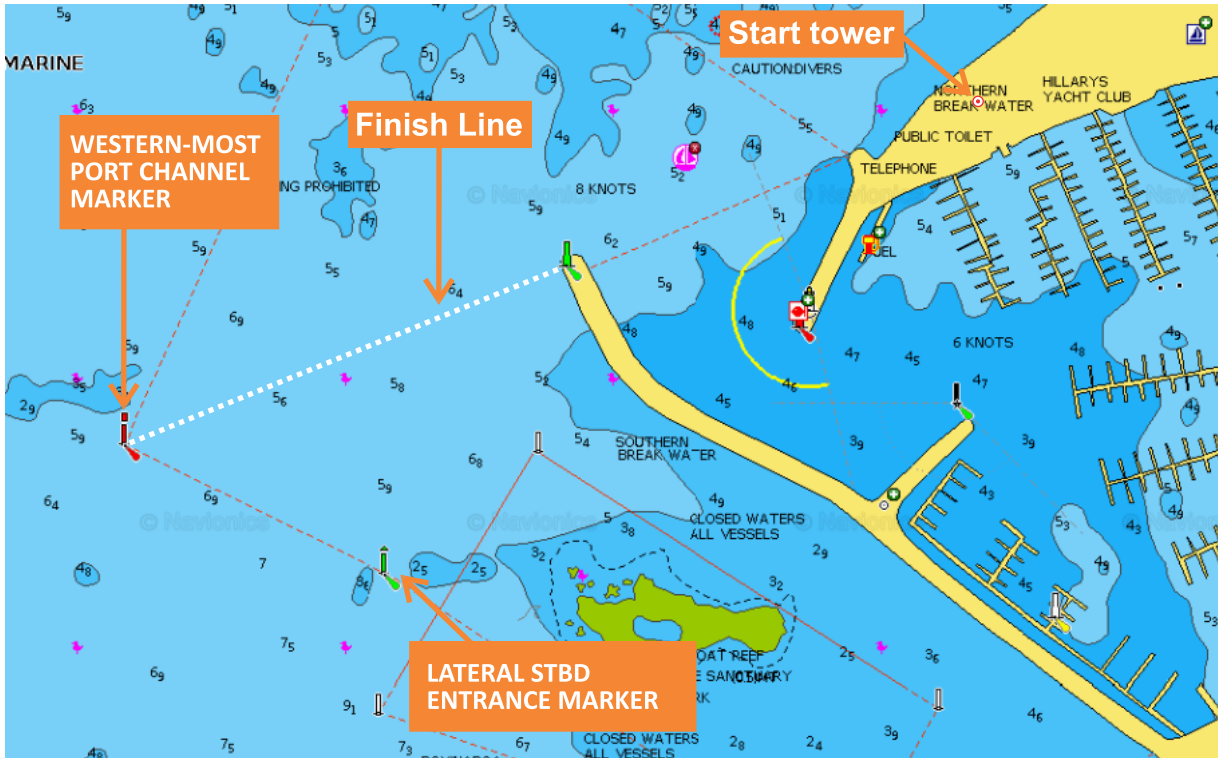


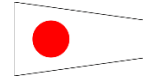
Diagram to show finish line only - Not for navigation

Hillarys Yacht Club
Pot of Gold Weekend

2025 Pot of Gold and Shepherdess Cup Supplementary Sailing Instructions

Shepherdess Cup
Course One (~17 Nm)

Course Signal



Mark	Rounding	Comment / Rounding Report
START		The start boat will be the HYC start boat "Alibi" off Sorrento Beach
DAY BUOY		
HYC SCARBOROUGH BEACH BUOY	STBD	
GAGE ROADS RED "A" BUOY	PORT	
CAMPBELL BUOY	STBD	Rounding report promptly after rounding on VHF 72
HALL BANK BEACON	STBD	
FINISH		The Finish